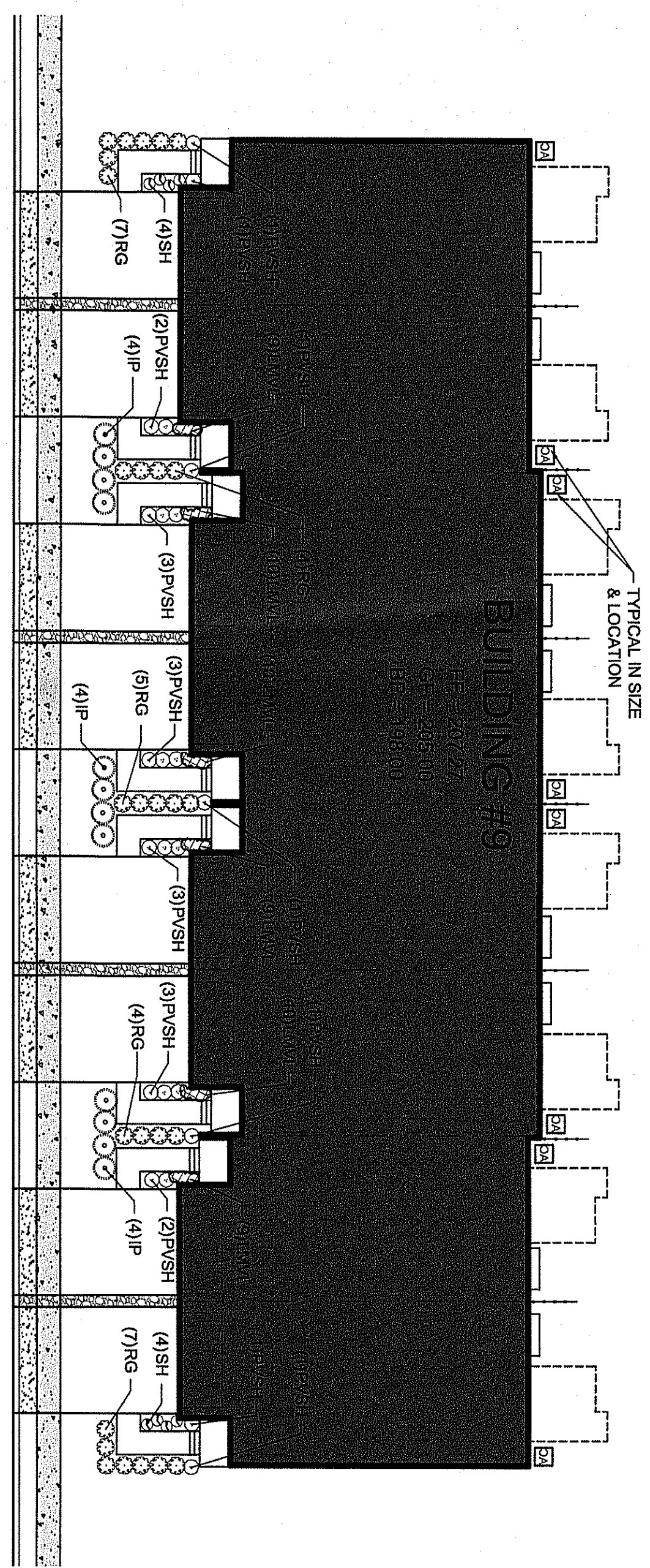
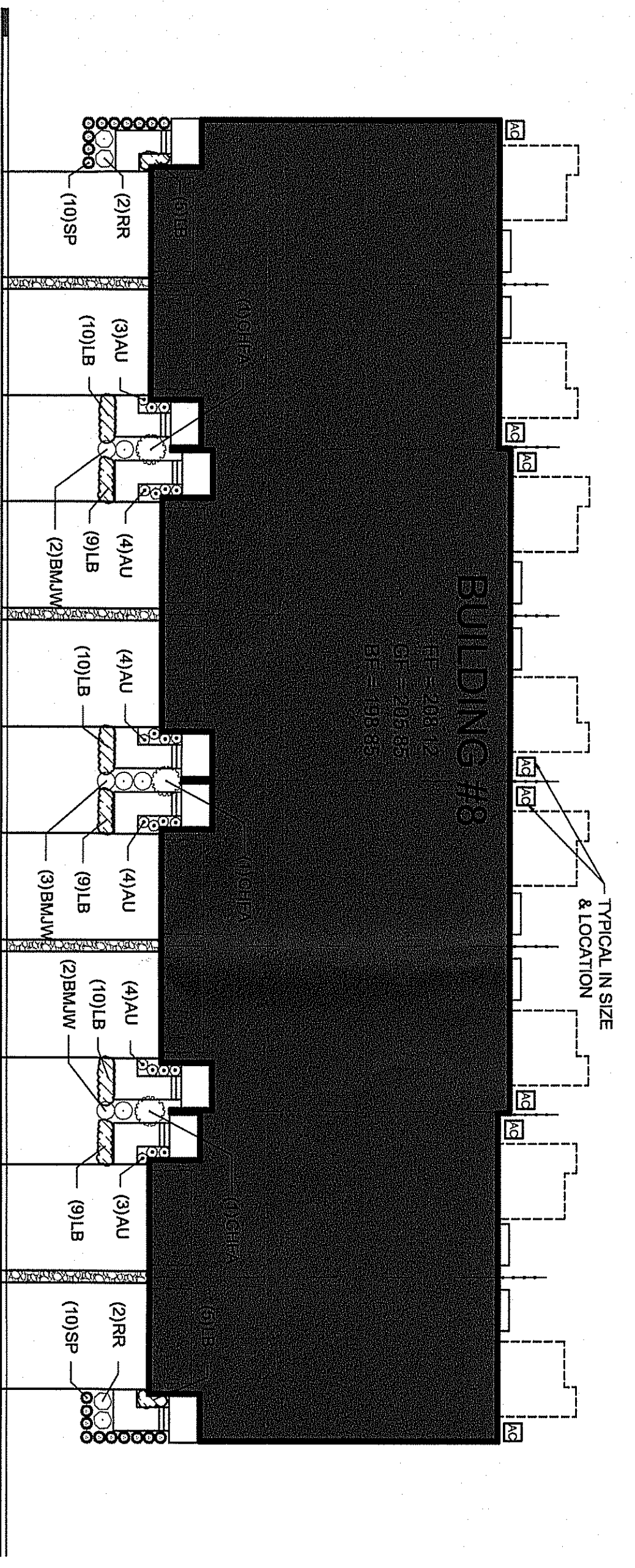


PLANT SCHEDULE EAST FACING					
DECIDUOUS SHRUBS	QTY	BOTANICAL NAME	COMMON NAME	ROOT	HITS/SPD
RR	27	RHUS AROMATICA 'GRO-LOW'	GRO-LOW RAIBGAWT SUMAC	CONTAINER	18" TO 24" 38' o.c.
EVERGREEN SHRUBS	QTY	BOTANICAL NAME	COMMON NAME	ROOT	HITS/SPD
IP	12	LEX YVESSENZAE 'BLUE PRINCE TM'	BLUE PRINCE HOLLY	CONTAINER	18" TO 24" 48' o.c.
SH	8	SARCOCOCOA HOOGMOEDIANA 'HUMILIS'	SWEET BOX	CONTAINER	15" TO 18" 24' o.c.
ORNA/MENTAL GRASSES	QTY	BOTANICAL NAME	COMMON NAME	ROOT	HITS/SPD
PSH	20	PANICUM VIRGATUM 'SHEENAROOHI'	SWITCH GRASS	#3 CONT.	12" TO 15" 30' o.c.
GROUND COVERS	QTY	BOTANICAL NAME	COMMON NAME	ROOT	SIZE
AVL	57	LIROPE MUSCARI VARIEGATA	VARIEGATED LILY TURF	4" POT	4" POT

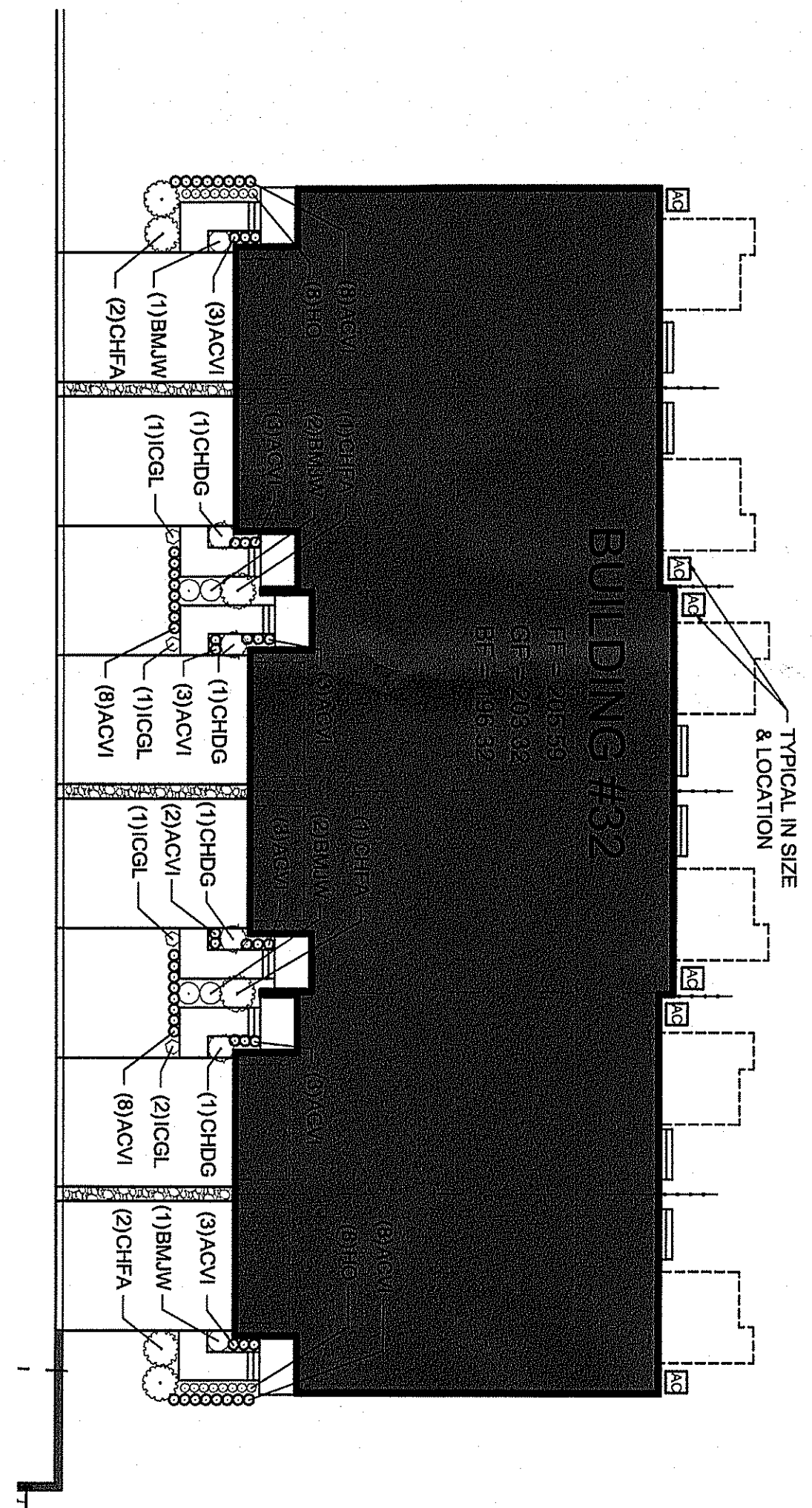


PLANTING TYPICAL ENLARGEMENT 01 - EAST FACING
SCALE: 1"=20'

PLANT SCHEDULE WEST FACING					
DECIDUOUS SHRUBS	QTY	BOTANICAL NAME	COMMON NAME	ROOT	HITS/SPD
RR	4	ROSA SHRUBS 'RADSON TM'	PINK KNOCKOUT ROSE	CONTAINER	18" 38' o.c.
EVERGREEN SHRUBS	QTY <th>BOTANICAL NAME</th> <th>COMMON NAME</th> <th>ROOT</th> <th>HITS/SPD</th>	BOTANICAL NAME	COMMON NAME	ROOT	HITS/SPD
ALU	22	IZALEA X GINKGO WHITE	GINKGO WHITE AZALEA	CONTAINER	18" TO 18" 24' o.c.
BLW	7	BULBS MARGOPHYLLA JAPONICA 'WINTER GEM'	WINTER GEM BOXWOOD	CONTAINER	18" TO 24" 38' o.c.
CHFA	3	CEPHALOTAXUS HARRINGTONIA FASTIGIATA	PLUM TREE	CONTAINER	24" TO 30" 42' o.c.
ORNA/MENTAL GRASSES	QTY	BOTANICAL NAME	COMMON NAME	ROOT	HITS/SPD
SP	20	SCHIZACHYRIUM SCOPARIUM 'PRAIRIE BLUES'	LITTLE BLUESTEM GRASS	#3 CONT.	10" TO 12" 24' o.c.
GROUND COVERS	QTY	BOTANICAL NAME	COMMON NAME	ROOT	SIZE
LB	67	LIROPE MUSCARI 'BIG BLUE'	BIG BLUE LILY TURF	4" POT	4" POT

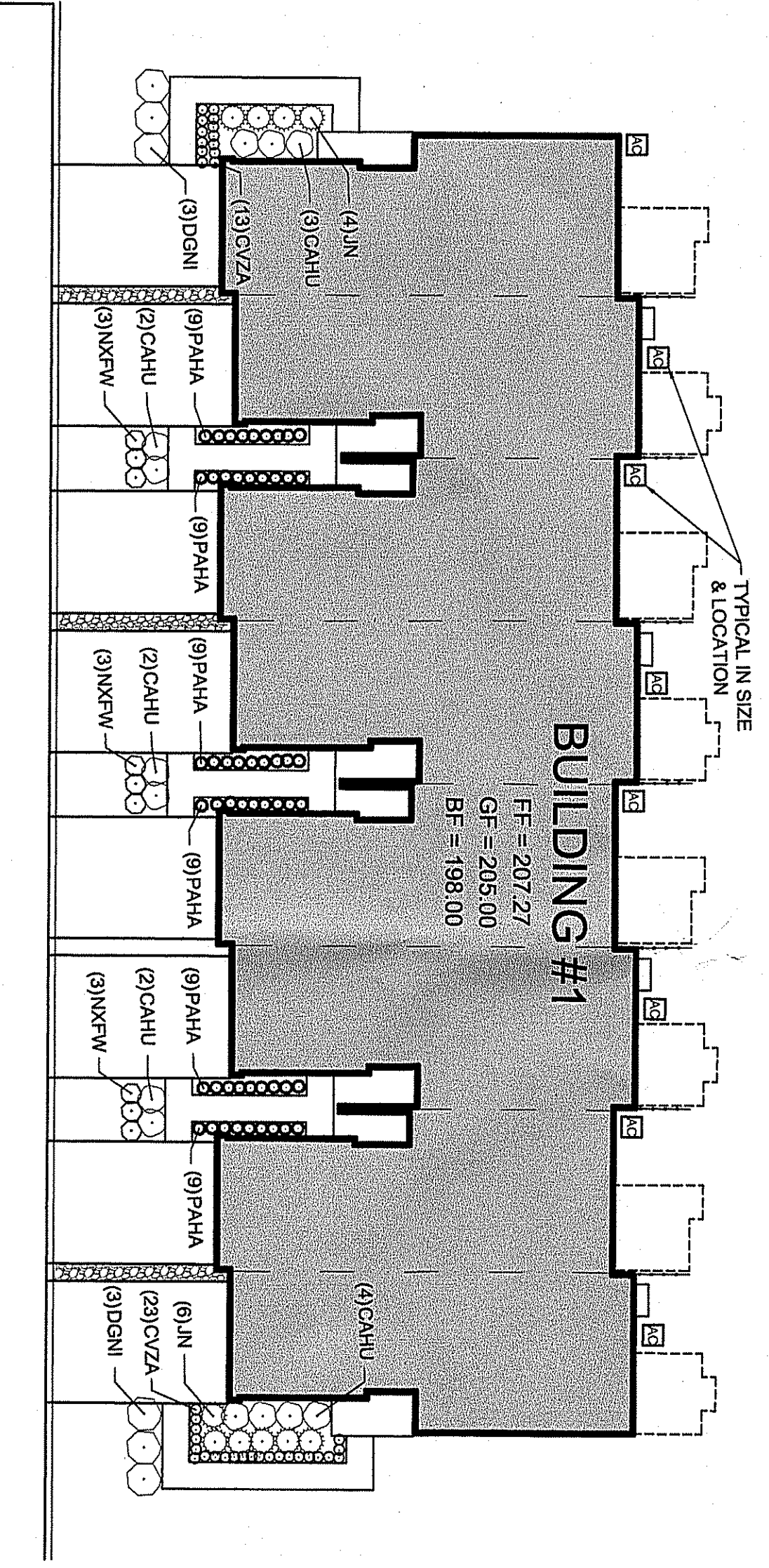


PLANTING TYPICAL ENLARGEMENT 02 - WEST FACING
SCALE: 1"=20'



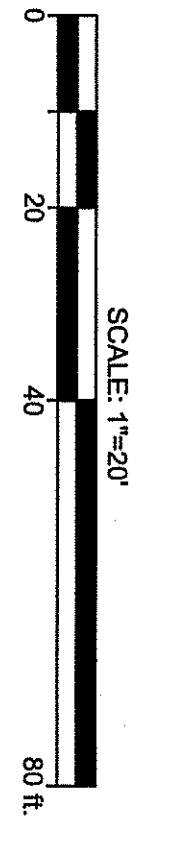
PLANTING TYPICAL ENLARGEMENT 03 - NORTH FACING
SCALE: 1"=20'

PLANT SCHEDULE NORTH FACING					
EVERGREEN SHRUBS	QTY	BOTANICAL NAME	COMMON NAME	ROOT	HITS/SPD
BLW	6	BULBS MARGOPHYLLA JAPONICA 'WINTER GEM'	WINTER GEM BOXWOOD	CONTAINER	18" TO 24" 38' o.c.
CHDG	4	CEPHALOTAXUS HARRINGTONIA 'DUNE GARDENS'	DUNE GARDENS PLUM TREE	CONTAINER	18" TO 24" 48' o.c.
CHFA	6	CEPHALOTAXUS HARRINGTONIA FASTIGIATA	PLUM TREE	CONTAINER	24" TO 30" 42' o.c.
ICGL	4	LEX CREMATA 'GREEN LUSTER'	GREEN LUSTER JAPANESE HOLLY	CONTAINER	18" TO 24" 48' o.c.
PERENNIALS	QTY	BOTANICAL NAME	COMMON NAME	ROOT	HITS/SPD
ACV	54	ASTILBE CHINENSIS 'VISIONS IN PINK'	CHINESE ASTILBE	CONTAINER	#3
HO	16	HEMEROCALLIS X STELLA DE ORO	STELLA DE ORO DAYLILY	CONTAINER	#1



PLANTING TYPICAL ENLARGEMENT 04 SOUTH FACING
SCALE: 1"=20'

PLANT SCHEDULE SOUTH FACING					
DECIDUOUS SHRUBS	QTY	BOTANICAL NAME	COMMON NAME	ROOT	HITS/SPD
CAHU	13	CLETHRA ALNIFOLIA 'HUMMINGBIRD'	SUMMERSWEET	CONTAINER	18" TO 24" 48' o.c.
DGNI	5	DEUTZIA GRACILIS 'NINKO'	SENDER DEUTZIA	CONTAINER	18" TO 24" 80' o.c.
EVERGREEN SHRUBS	QTY	BOTANICAL NAME	COMMON NAME	ROOT	HITS/SPD
JN	10	JUNIPERUS PROCEUMBENS 'NANA'	SHORE JUNIPER	CONTAINER	18" TO 24" 48' o.c.
ORNA/MENTAL GRASSES	QTY	BOTANICAL NAME	COMMON NAME	ROOT	HITS/SPD
PAVA	54	PENISSETUM ALPECUROIDES 'HAHAEL'	HAHAEL DWARF FOUNTAIN GRASS	#3 CONT.	12" TO 15" 24' o.c.
PERENNIALS	QTY	BOTANICAL NAME	COMMON NAME	ROOT	HITS/SPD
CUZA	36	COROPHIS VERTICILLATA 'ZAGREB'	ZAGREB THREAD LEAF COROPHIS	CONTAINER	18" o.c.
NKSW	9	NERITA X FASSENII 'WALKERS LOW'	WALKERS LOW CALYMIT	CONTAINER	#3



THESE PLANS ARE NOT TO BE USED FOR BID OR CONSTRUCTION

PLANS ARE FINAL FOR SANITARY SEWER AND WATER MAIN DESIGN

PRELIMINARY AND FINAL MAJOR SUBDIVISION & PRELIMINARY AND FINAL SITE PLAN
TAX MAP SHEET 166 DATED 12/1987, REV 04-10-01 AND SHEET 174 DATED 12/1987, REV 5-12-2003

EL at MARLBORO 79, LLC - MARLBORO PARKE
TYPICAL FOUNDATION
LANDSCAPE PLANS
BLOCK 415, LOT 22
TOWNSHIP OF MARLBORO, MONMOUTH COUNTY, NEW JERSEY

Bowman Consulting Group, Ltd.
303 W. Main Street
Freehold, New Jersey 07728
www.bowmanconsulting.com
E-mail: NJ@BowmanConsulting.com

Phone: 732-665-5500
Fax: 732-665-5501
NJ Certificate of Authorization
No. MH000035

Craig R. Cartmell
CRAIG R. CARTMELL, N.J. Landscape Architect, Lic. No. AS001084

Bowman CONSULTING

PROJ: 080726-F1-003
DATE: 01.17.2020
CHKD: SAG

THIS DRAWING AND ALL INFORMATION CONTAINED HEREIN IS AUTHORIZED FOR USE ONLY BY THE PARTY FOR WHICH IT IS CERTIFIED. THIS DRAWING MAY NOT BE COPIED, REPRODUCED, OR DISTRIBUTED OR USED FOR ANY OTHER PURPOSE WITHOUT THE WRITTEN CONSENT OF BOWMAN CONSULTING GROUP, LTD. ALL RIGHTS RESERVED.

REVISIONS AS PER MARCH 6, 2020 CME REVIEW LETTER	DATE	CHKD
4/20/20		

NO.	DATE	REVISION	DATE	CHKD
1				
2				
3				
4				
5				
6				
7				

SHEET NO. **10**