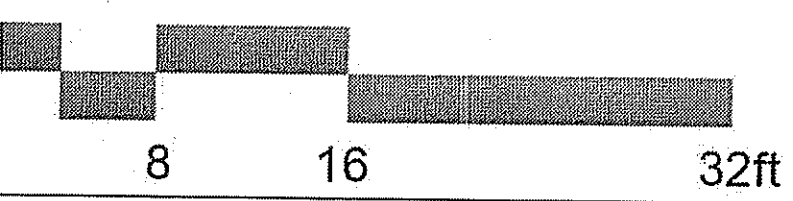


**FIRST FLOOR PLAN**

Scale: 1/8" = 1'-0"

**BUILDING A - 20 UNITS**

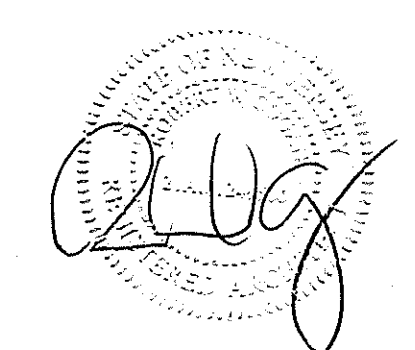
Building #5/6/7/8/9



**The Place at Marlboro**  
Marlboro, New Jersey

Project Number: 17013  
Client: Community Investment Strategies  
Drawing Number: 01 of 16  
Date: 2019.07.14

A-13

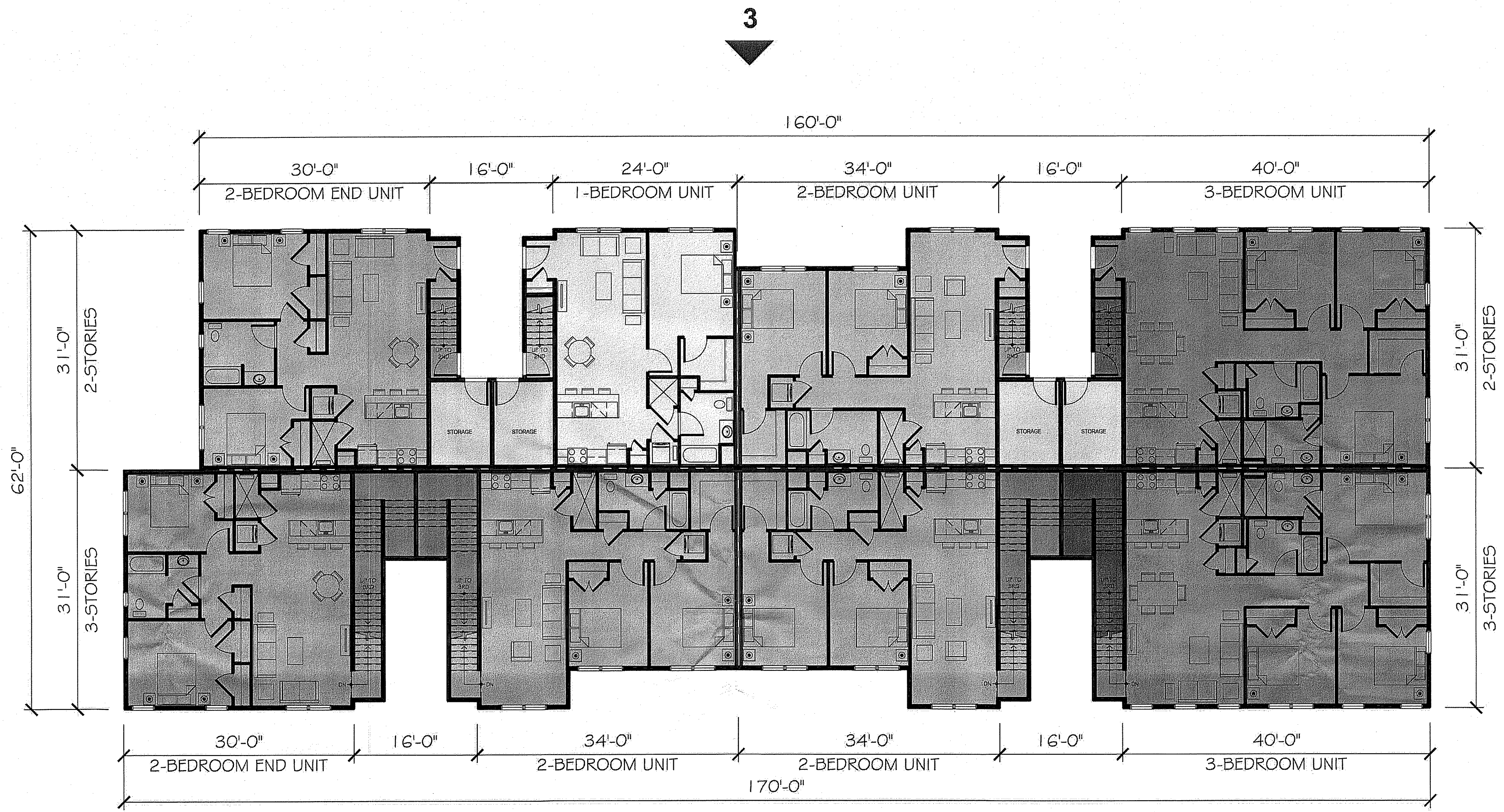


The above illustrations are representative of the architectural style. They are not meant to illustrate the final design or materials but are intended to depict the size, mass, and general materials of the proposed building.

©2020 BartonPartners Architects Planners, Inc. All rights reserved.

**BARTON PARTNERS**  
urban design + architecture + interiors

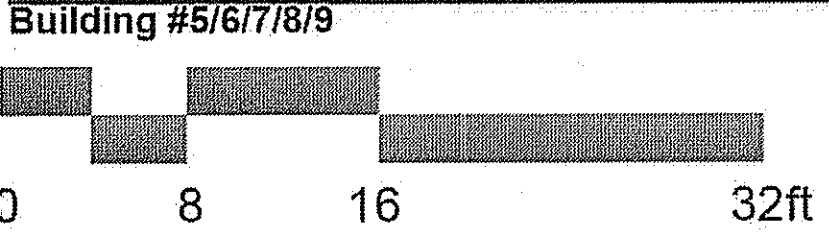
Contact 610.930.2800 www.bartonpartners.com	Norristown 700 E. Main St. Suite 301 Norristown, PA 19401	Philadelphia 1524 Delancey St. 3rd Floor Philadelphia, PA 19102
---	---	---



**SECOND FLOOR PLAN**

Scale: 1/8" = 1'-0"

**BUILDING A - 20 UNITS**

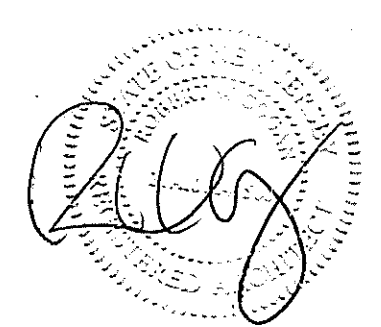


The above illustrations are representative of the architectural style. They are not meant to illustrate the final design or materials but are intended to depict the size, mass, and general materials of the proposed building.

©2020 BartonPartners Architects Planners, Inc. All rights reserved.

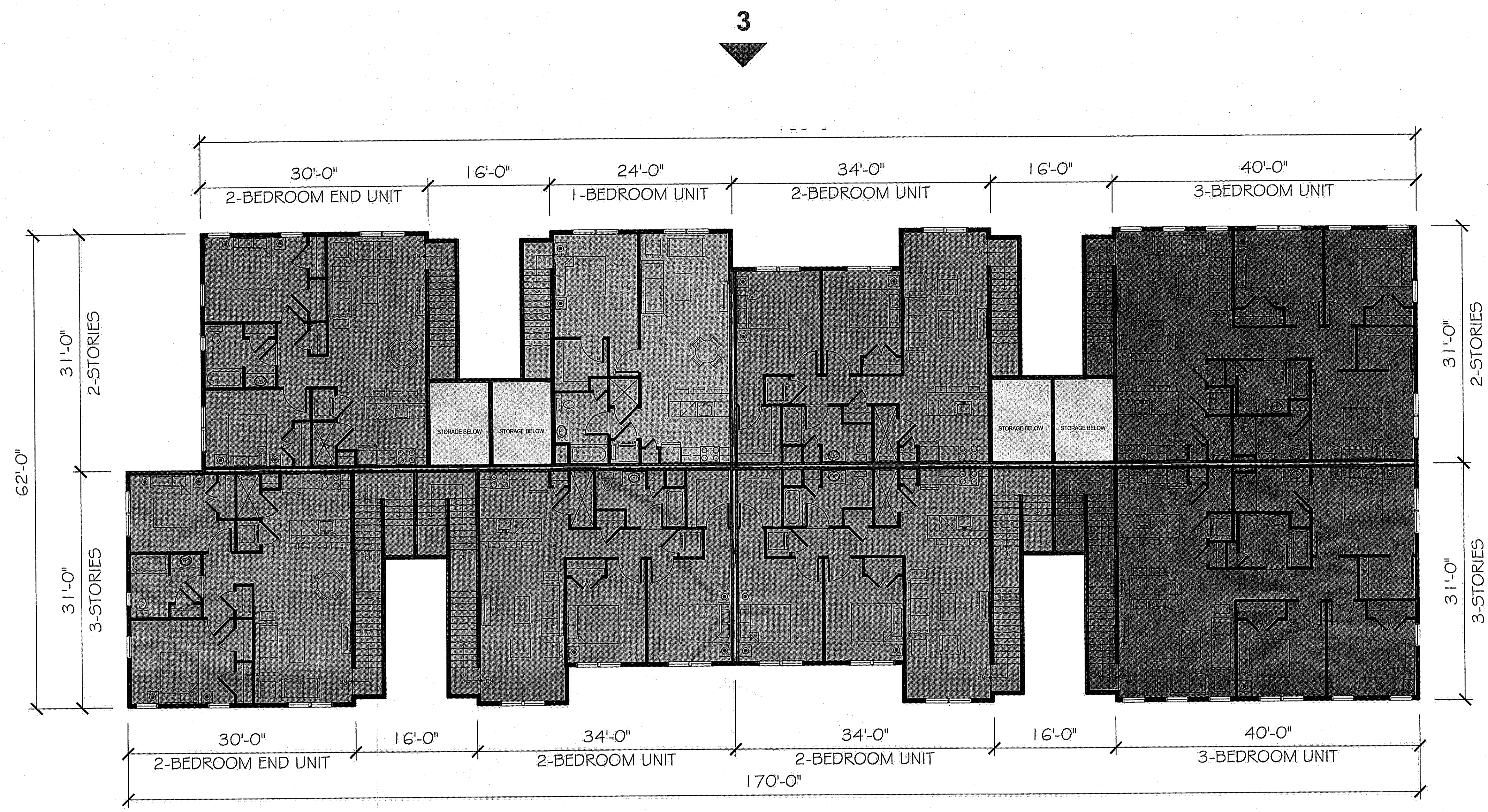
**The Place at Marlboro**  
Marlboro, New Jersey

Project Number: 17013  
Client: Community Investment Strategies  
Drawing Number: 02 of 16  
Date: 2019.07.14



**BARTON PARTNERS**  
urban design + architecture + interiors

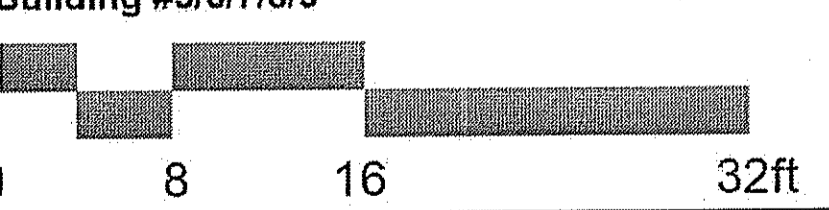
Contact 610.930.2800 www.bartonpartners.com	Norristown 700 E. Main St. Suite 301 Norristown, PA 19401	Philadelphia 1524 Delancey St. 3rd Floor Philadelphia, PA 19102
---	---	---



**THIRD FLOOR PLAN**

Scale: 1/8" = 1'-0"

**BUILDING A - 20 UNITS**  
Building #5/6/7/8/9



**The Place at Marlboro**  
Marlboro, New Jersey

Project Number: 17013  
Client: Community Investment Strategies  
Drawing Number: 03 of 16  
Date: 2019.07.14

The above illustrations are representative of the architectural style. They are not meant to illustrate the final design or materials but are intended to depict the size, mass, and general materials of the proposed building.

©2020 BartonPartners Architects Planners, Inc. All rights reserved.

**BARTONPARTNERS**  
urban design + architecture + interiors

Contact 610.930.2800 www.bartonpartners.com	Norristown 700 E. Main St. Suite 301 Norristown, PA 19401	Philadelphia 1524 Delancey St. 3rd Floor Philadelphia, PA 19102
---	---	---

