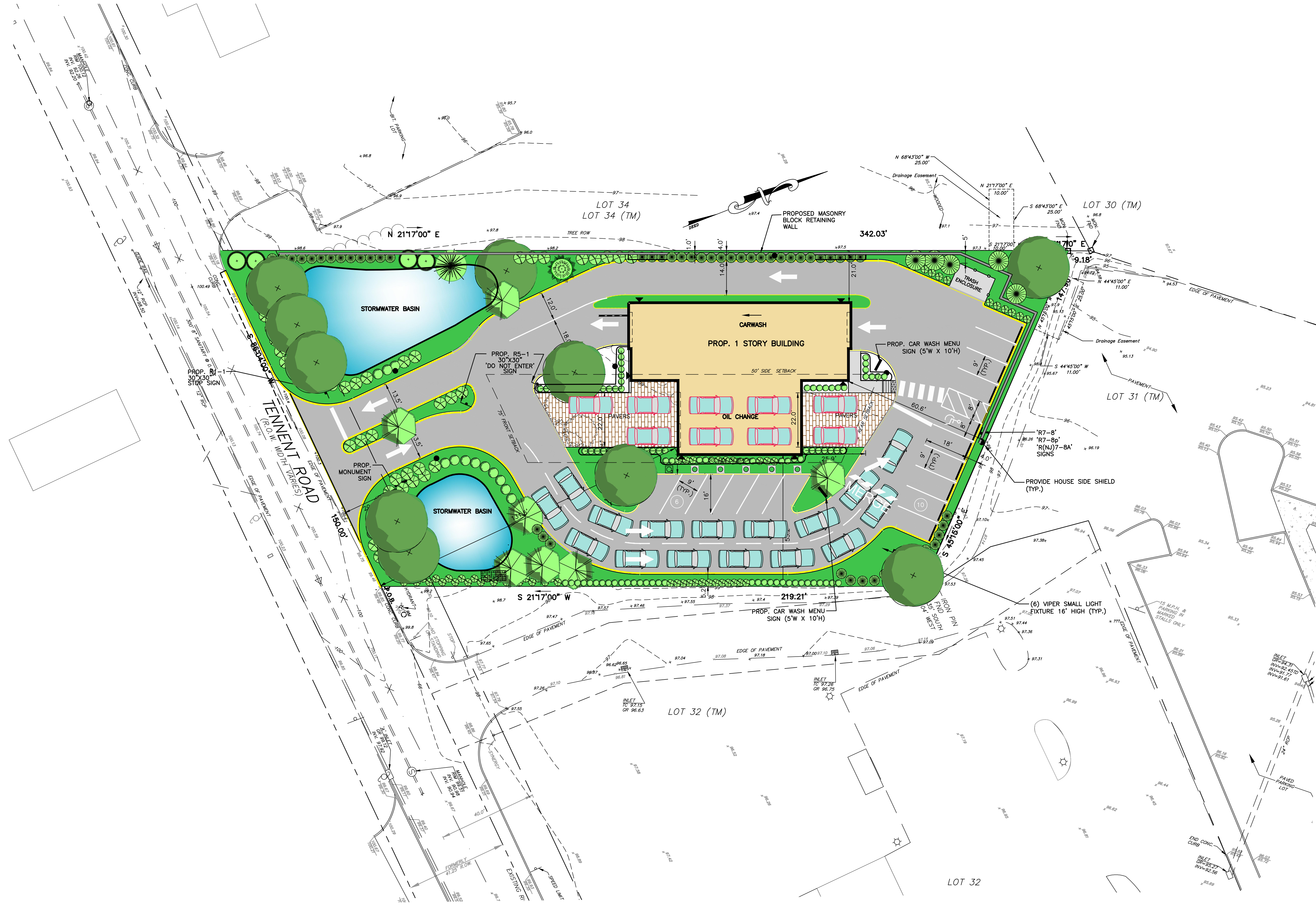
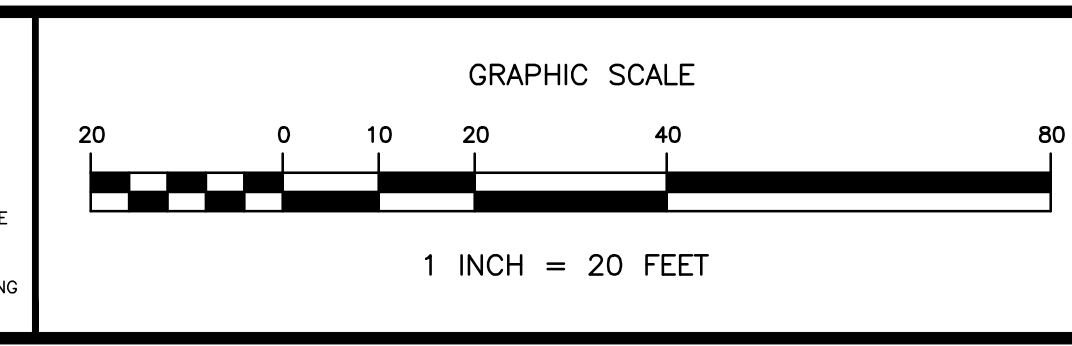


KEY MAP  
SCALE: 1"=300'-0"



| REVISION NO. | DATE | REVISION |
|--------------|------|----------|
|              |      |          |
|              |      |          |
|              |      |          |
|              |      |          |

NOTICE—  
THIS DRAWING AND ALL INFORMATION CONTAINED HEREIN IS AUTHORIZED FOR USE ONLY BY THE PARTY FOR WHOM THE WORK WAS CONTRACTED OR TO WHOM IT IS CERTIFIED.  
THIS DRAWING MAY NOT BE COPIED, REUSED, DISCLOSED, DISTRIBUTED OR RELIED UPON FOR ANY OTHER PURPOSE WITH THE WRITTEN CONSENT OF CRANMER ENGINEERING, P.A.  
COPYRIGHT 2020 - CRANMER ENGINEERING P.A. - ALL RIGHTS RESERVED.



DAVID A. CRANMER, PE  
LICENSED PROFESSIONAL ENGINEER  
STATE OF NEW JERSEY LICENSE No. 41926

**Cranmer Engineering, P.A.**  
CORPORATE HEADQUARTERS: 459 Broad Street, Suite 100B, Shrewsbury, NJ 07702, Tel. (732) 212-8900, Fax (732) 212-8910  
SOUTHEAST REGIONAL OFFICE: 301 McCollough Drive, Charlotte, NC 28262, Tel. (704) 909-2900, Fax (704) 909-2898  
www.cranmerengineering.com  
INTEGRITY | INNOVATION | EXCELLENCE

**VARIANCE PLAN**  
**TENNENT ROAD WASH & LUBE, LLC**  
**LOT 33, BLOCK 122**  
TAX MAP SHEET NO. 9  
TOWNSHIP OF MARLBORO MONMOUTH COUNTY NEW JERSEY

|                             |                                  |
|-----------------------------|----------------------------------|
| PROJECT No.<br>2018-015-125 | FILE RENDERING<br>2020-06-09.dwg |
| DRAWN BY<br>OK              | DESIGNED BY<br>DAC               |
| CHECKED BY<br>DAC           | CHECKED BY<br>DAC                |
| DATE<br>JUNE 9, 2020        | SHEET NO.<br>1 of 1              |