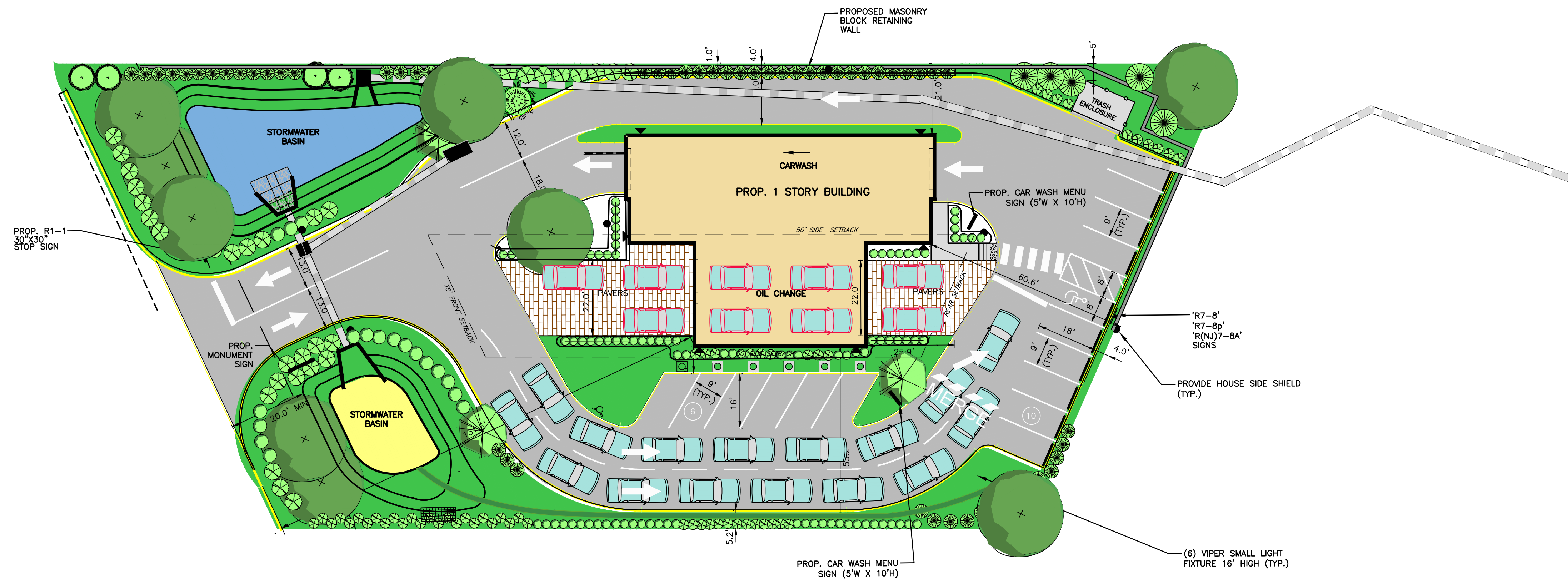


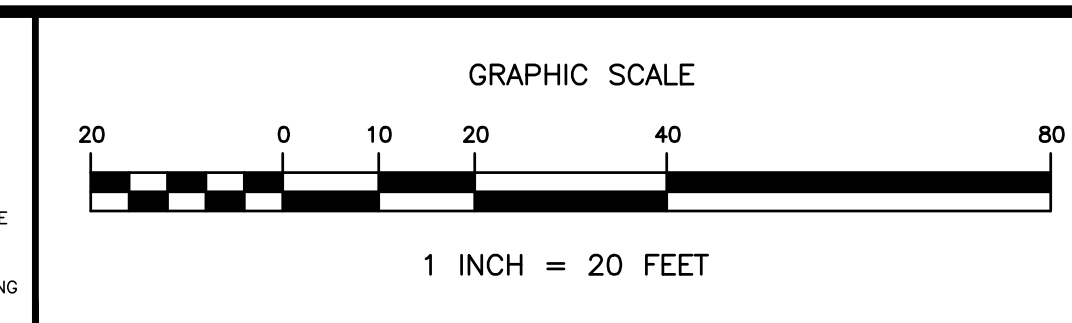
KEY MAP
SCALE: 1"=300'-±



A:\2018-015-125_Plan_Cranmer & Associates\ENGINEERING_2020-06-09 - Copy.dwg

REVISION NO.	DATE	REVISION

—NOTICE—
THIS DRAWING AND ALL INFORMATION CONTAINED HEREIN IS AUTHORIZED FOR USE ONLY BY THE PARTY FOR WHOM THE WORK WAS CONTRACTED OR TO WHOM IT IS CERTIFIED.
THIS DRAWING MAY NOT BE COPIED, REUSED, DISCLOSED, DISTRIBUTED OR RELIED UPON FOR ANY OTHER PURPOSE WITH THE WRITTEN CONSENT OF CRANMER ENGINEERING, P.A.
COPYRIGHT 2020 - CRANMER ENGINEERING P.A. - ALL RIGHTS RESERVED.



DAVID A. CRANMER, PE
LICENSED PROFESSIONAL ENGINEER
STATE OF NEW JERSEY LICENSE No. 41926

Cranmer Engineering, P.A.
CORPORATE HEADQUARTERS: 459 Broad Street, Suite 100B, Shrewsbury, NJ 07702, Tel. (732) 212-8900, Fax (732) 212-8910
SOUTHEAST REGIONAL OFFICE: 301 McCollough Drive, Charlotte, NC 28262, Tel. (704) 909-2900, Fax (704) 909-2898
www.cranmerengineering.com
INTEGRITY | INNOVATION | EXCELLENCE

SITE PLAN RENDERING
TENNENT ROAD WASH & LUBE, LLC
LOT 33, BLOCK 122
TAX MAP SHEET NO. 9
TOWNSHIP OF MARLBORO MONMOUTH COUNTY NEW JERSEY

PROJECT No. 2018-015-125	FILE RENDERING 2020-06-09 - Copy.dwg
DRAWN BY OK	DESIGNED BY DAC
SCALE 1"=20'	CHECKED BY DAC
DATE JULY 2, 2020	SHEET NO. 1 of 1