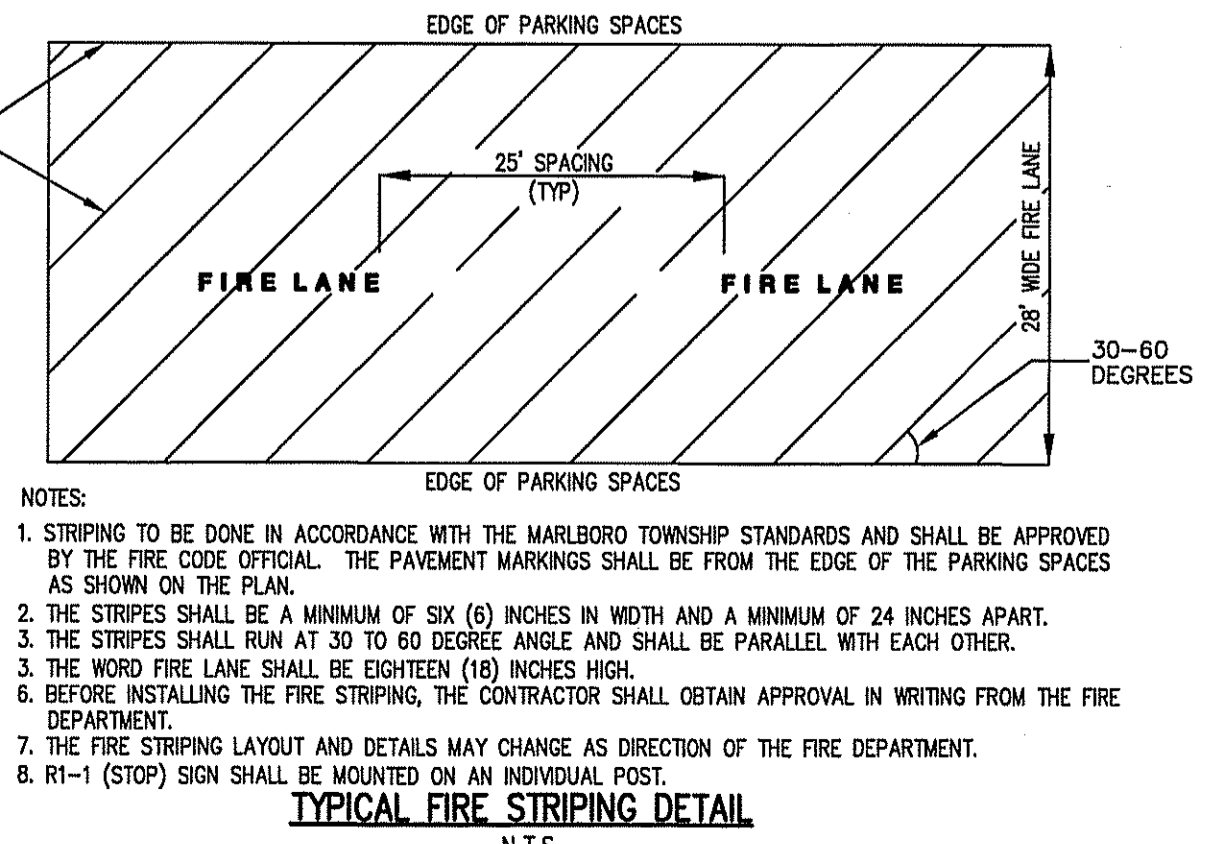


SIGN DETAILS				
SIGN	SIGN TYPE	SIGN SIZE	MOUNT TYPE	
	R1-1	30"x30"	1 POST	
	R7-9 & R7-9A (PENALTY PLATE), & R7-B (VAN ACCESSIBLE)	30"x30"	1 POST	

SIGN DETAILS				
SIGN	SIGN TYPE	SIGN SIZE	MOUNT TYPE	
	R5-1	30"x30"	1 POST	
	R6-2L	18"x24"	1 POST	
	K-1755	12"x18"	1 POST	



REV.	DATE	DESCRIPTION	BY	APPV'D
9	1/14/20	REVISED PER INCREASED PARKING AISLE WIDTH	JB	JB
8	12/8/17	REVISED PER COUNTY COMMENTS OF 11/22/17	JB	JB
7	7/19/17	REVISED PER COUNTY COMMENTS OF 4/24/17 & TWP COMMENTS OF 5/8/17	JB	JB
6	9/29/16	REVISED PER COUNTY PLANNING BOARD CONDITIONAL APPROVAL OF 8/10/16	JB	JB
5	5/4/16	REVISED PER TWP. REVIEW LETTER & AMENDED RESOLUTION	JB	JB
4	10/22/15	REVISED PER BUILDING MODIFICATIONS	JB	JB
3	6/16/11	REVISED PER TWP. & COUNTY REVIEW LETTERS	JB	JB
2	2/15/10	REVISED PER TWP. REVIEW LETTERS	SB	SB
1	11/25/09	REVISED PER ZONING BOARD COMMENT LETTER DATED 10/14/09	SB	SB
REV.	DATE	DESCRIPTION	CHK'D	APPV'D

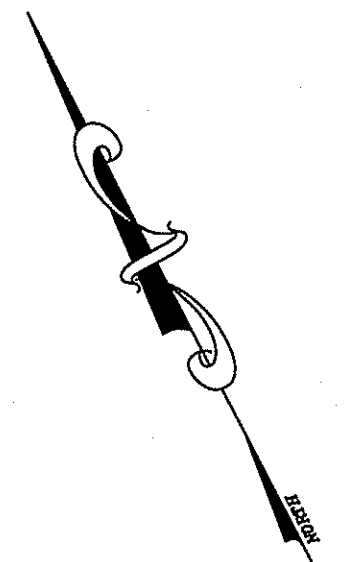
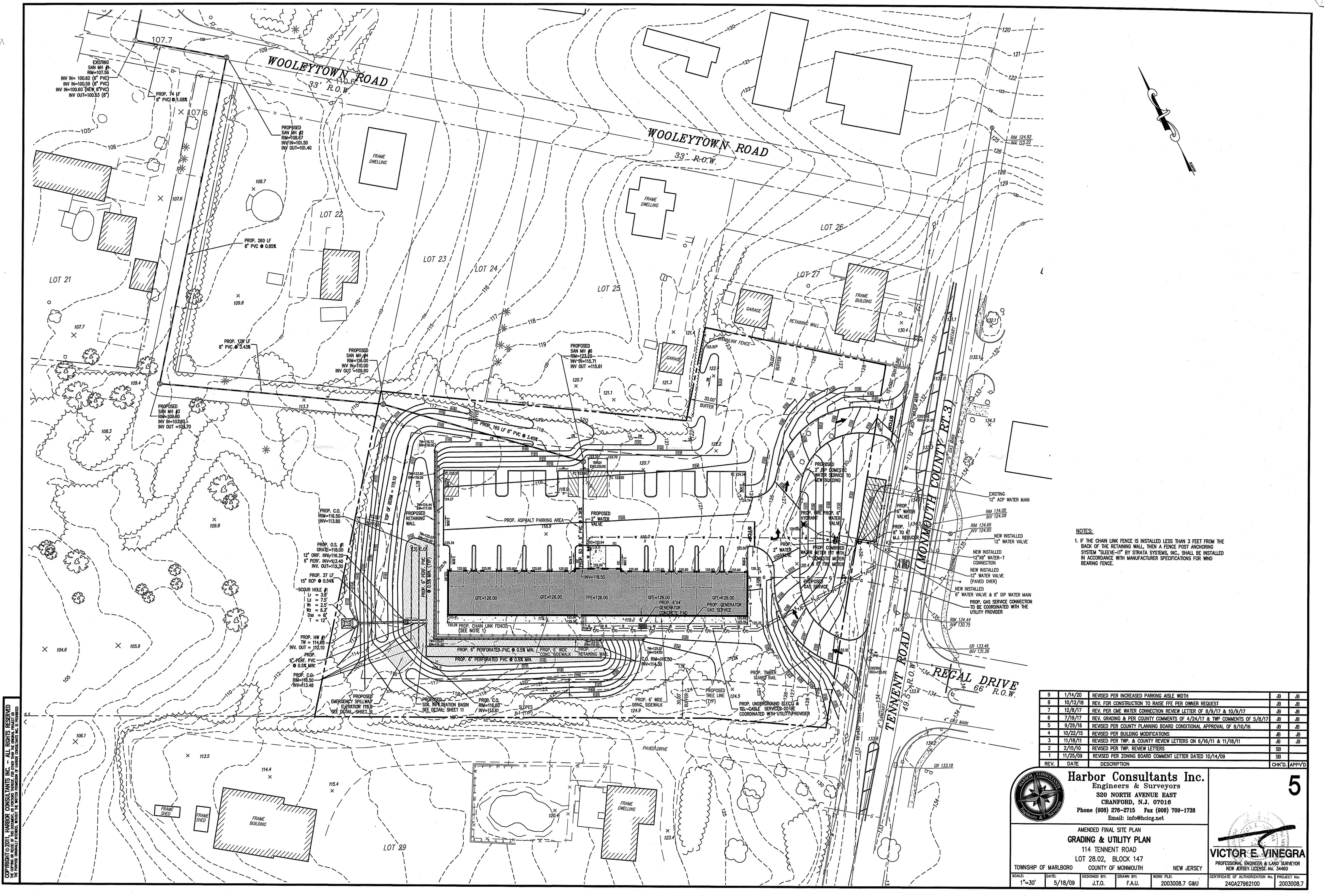
Harbor Consultants Inc.
 Engineers & Surveyors
 320 NORTH AVENUE EAST
 CRANFORD, N.J. 07016
 Phone (908) 276-2715 Fax (908) 700-1738
 Email: info@hctinc.net

AMENDED FINAL SITE PLAN
 LAYOUT & DIMENSIONING PLAN
 114 TENNENT ROAD
 LOT 28.02, BLOCK 147
 TOWNSHIP OF MARLBORO COUNTY OF MONMOUTH NEW JERSEY

SCALE: 1"=30'
 DATE: 5/18/09
 DESIGNED BY: J.T.O.
 DRAWN BY: F.A.U.
 WORK FILE: 2003008.7 L&D
 PROJECT NO: 24627962100
 2003008.7

VICTOR E. VINEGRA
 PROFESSIONAL ENGINEER & LAND SURVEYOR
 NEW JERSEY LICENSE NO. 34460

COPYRIGHT © 2009, HARBOR CONSULTANTS INC. - ALL RIGHTS RESERVED
 THE INFORMATION CONTAINED HEREIN IS THE PROPERTY OF HARBOR CONSULTANTS INC. AND IS TO BE USED ONLY FOR THE PROJECT AND SITE SPECIFICALLY IDENTIFIED HEREIN.



NOTES:
 1. IF THE CHAIN LINK FENCE IS INSTALLED LESS THAN 3 FEET FROM THE BACK OF THE RETAINING WALL, THEN A FENCE POST ANCHORING SYSTEM "SLEEVE-IT" BY STRATA SYSTEMS, INC. SHALL BE INSTALLED IN ACCORDANCE WITH MANUFACTURER SPECIFICATIONS FOR WIND BEARING FENCE.

REV.	DATE	DESCRIPTION	CHK'D.	APP'D.
9	1/14/20	REVISED PER INCREASED PARKING AISLE WIDTH	JB	JB
8	10/12/18	REV. FOR CONSTRUCTION TO RAISE FFE PER OWNER REQUEST	JB	JB
7	12/8/17	REV. PER CME WATER CONNECTION REVIEW LETTER OF 8/9/17 & 10/9/17	JB	JB
6	7/19/17	REV. GRADING & PER COUNTY COMMENTS OF 4/24/17 & TWP COMMENTS OF 5/8/17	JB	JB
5	9/29/16	REVISED PER COUNTY PLANNING BOARD CONDITIONAL APPROVAL OF 8/10/16	JB	JB
4	10/22/15	REVISED PER BUILDING MODIFICATIONS	JB	JB
3	11/18/11	REVISED PER TWP. & COUNTY REVIEW LETTERS ON 6/16/11 & 11/18/11	JB	JB
2	2/15/10	REVISED PER TWP. REVIEW LETTERS	SB	SB
1	11/25/09	REVISED PER ZONING BOARD COMMENT LETTER DATED 10/14/09	SB	SB
			CHK'D.	APP'D.



Harbor Consultants Inc.
 Engineers & Surveyors
 320 NORTH AVENUE EAST
 CRANFORD, N.J. 07016
 Phone (908) 278-2715 Fax (908) 700-1738
 Email: info@hcieg.net

5

AMENDED FINAL SITE PLAN
GRADING & UTILITY PLAN
 114 TENNENT ROAD
 LOT 28.02, BLOCK 147

TOWNSHIP OF MARLBORO COUNTY OF MONMOUTH NEW JERSEY
 SCALE: 1"=30' DATE: 5/18/09 DESIGNED BY: J.T.O. DRAWN BY: F.A.U. WORK FILE: 2003008.7 G&U CERTIFICATE OF AUTHORIZATION No. 34460 PROJECT No. 246A27962100 2003008.7

COPYRIGHT © 2011, HARBOR CONSULTANTS INC. - ALL RIGHTS RESERVED.
 THE CONTENT OF THIS DOCUMENT IS THE PROPERTY OF HARBOR CONSULTANTS INC. AND IS TO BE USED ONLY FOR THE PROJECT AND SITE SPECIFICALLY IDENTIFIED HEREIN. ANY OTHER USE OF THIS DOCUMENT WITHOUT THE WRITTEN PERMISSION OF HARBOR CONSULTANTS INC. IS PROHIBITED.

CONTACT:
JEFF PLATZKE
INDEPENDENT LIGHTING ASSOCIATES
96 FRENCH AVENUE MATAMORAN NJ 07747
JEFF@ILADesignTeam.com

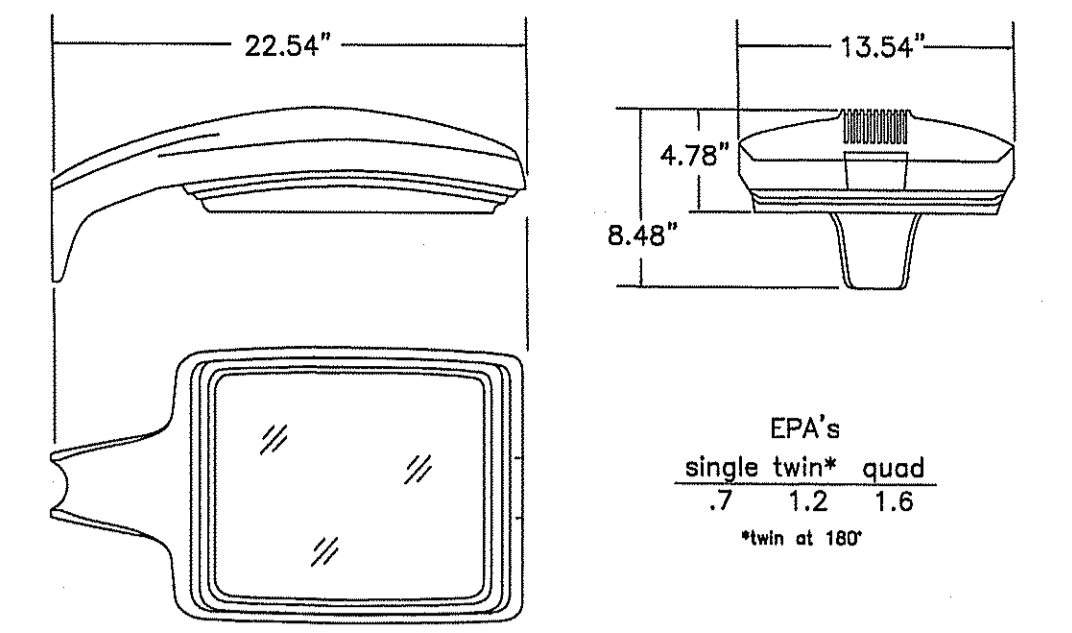
AS THE BASE DRAWING MAY HAVE CHANGED,
PLEASE EXTRACT ONLY THE LIGHTING CALCULATION
LAYERS FROM THIS FILE.

THESE CALCULATIONS ARE MADE USING ACCEPTED
PROCEDURES OF THE ILLUMINATING ENGINEERING
SOCIETY OF NORTH AMERICA.
VARIATIONS IN LAMP OUTPUT, BALLAST OUTPUT,
LINE VOLTAGE, DIRT CONDITIONS AND OTHER
FACTORS CAN AFFECT ACTUAL RESULTS.
UNLESS OTHERWISE STATED, ALL RESULTS ARE MAINTAINED
VALUES, USING ACCEPTED LIGHT LOSS FACTORS (LLF).

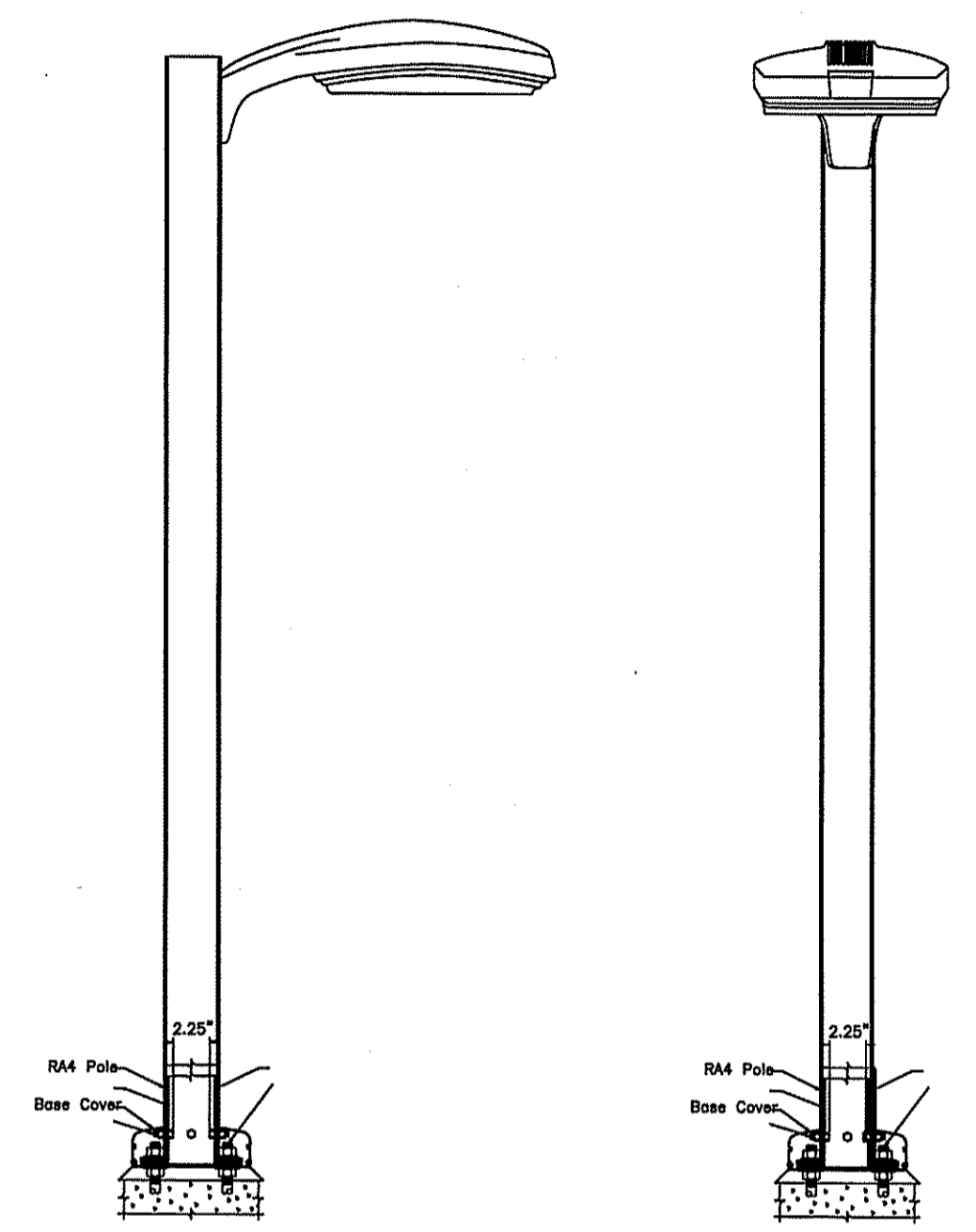
LUMINAIRE SUBSTITUTIONS MUST BE OF SAME FORM
AND EQUAL PERFORMANCE. SUBMITTALS WITHOUT
PHOTOMETRIC DATA AND SUBSTANTIATING
POINT-BY-POINT ANALYSIS WILL NOT BE CONSIDERED.

LUMINAIRE SCHEDULE						
SYMBOL	QTY	LABEL	ARRANGEMENT	LUMENS	LLF	DESCRIPTION
■	8	G	SINGLE	16000	0.750	GARCO GULLING G13-3XL-150HPS-HS @ 15.5' POLE: 16' SSR
-	14	GW	SINGLE	8400	0.750	GARCO WALL GULLING WALL SCORE: 107-WT-100PSMH MH=15'

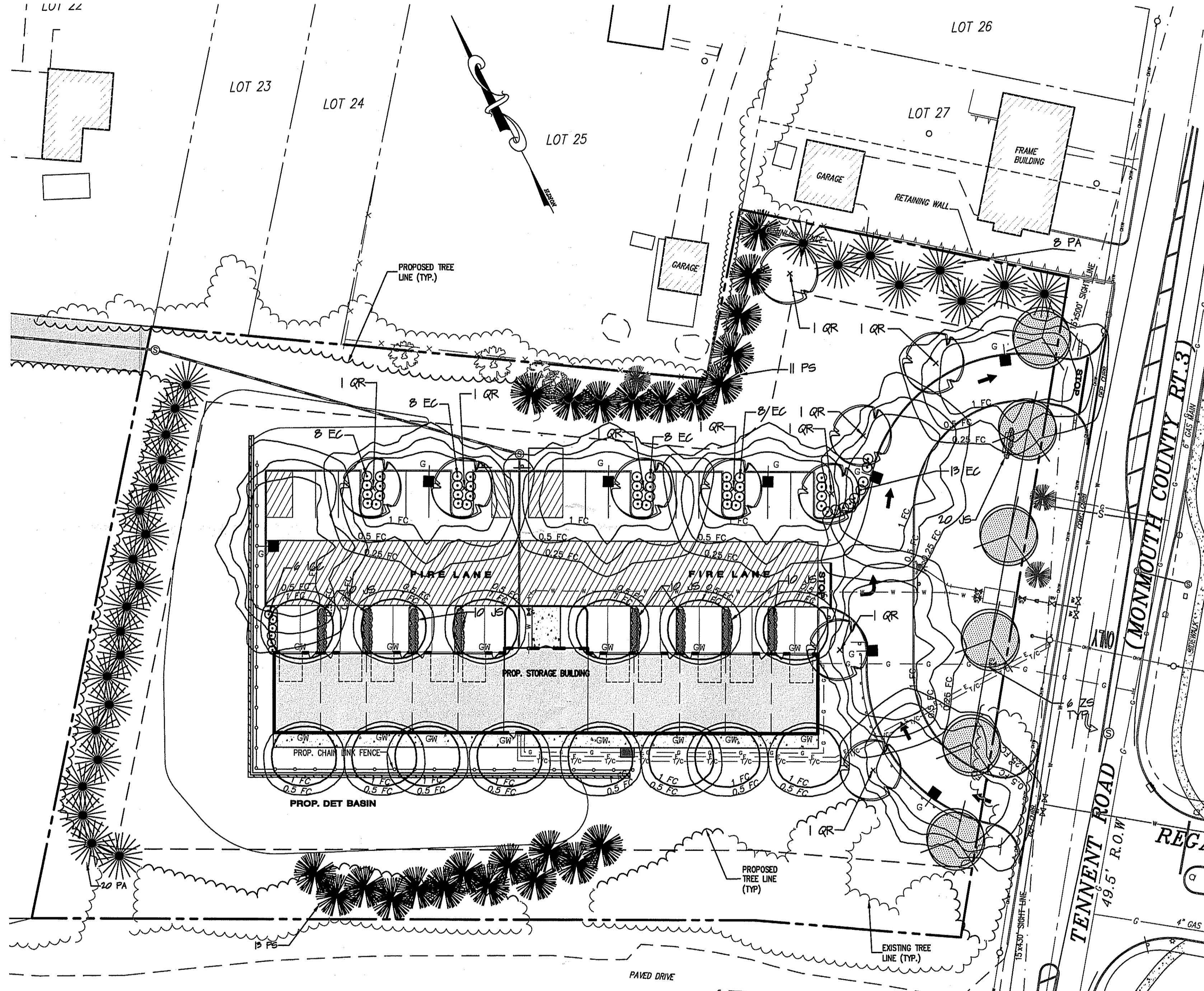
CALCULATION SUMMARY								
LABEL	DESCRIPTION	CALCTYPE	UNITS	AVG	MAX	MIN	AVG/MIN	MAX/MIN
CALCPTS		ILLUMINANCE	Fc	0.70	6.5	0.0	N.A.	N.A.
PARKING		ILLUMINANCE	Fc	1.57	6.5	0.5	3.14	13.00
DRIVEWAY		ILLUMINANCE	Fc	1.42	2.8	0.2	7.10	14.00



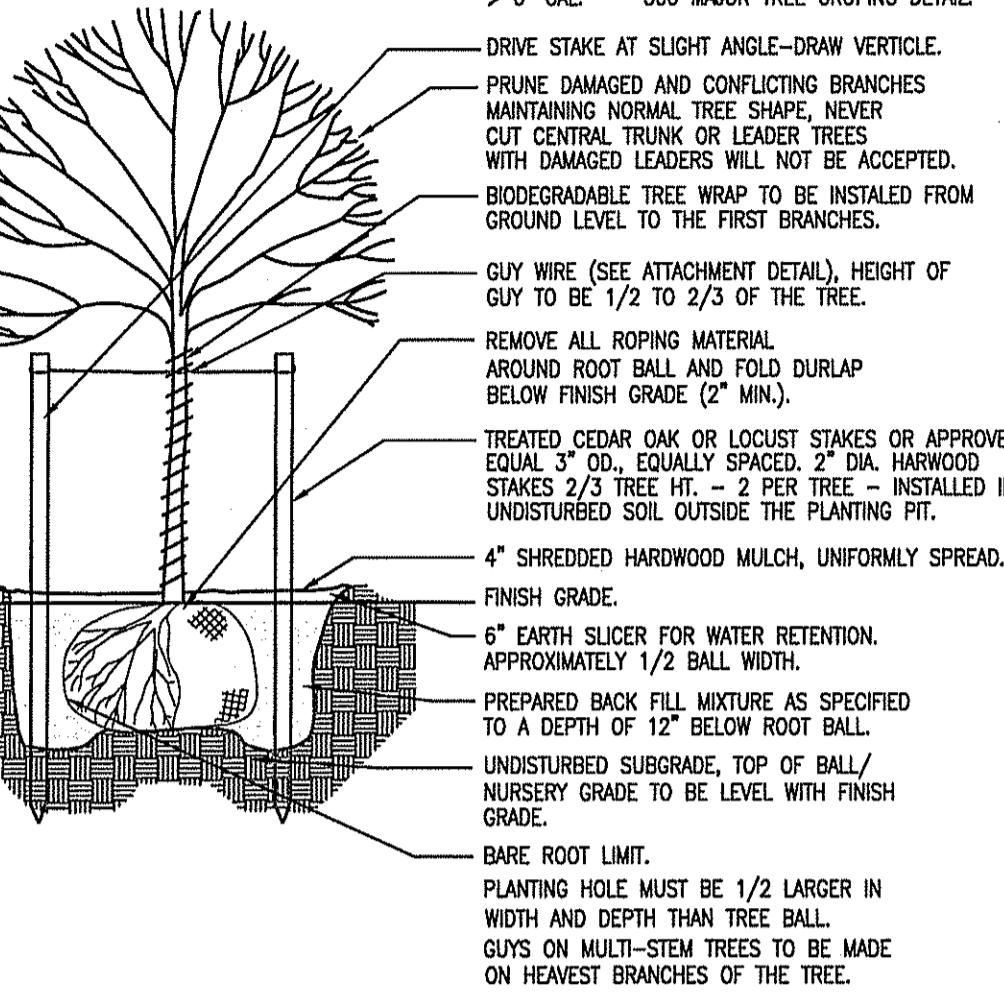
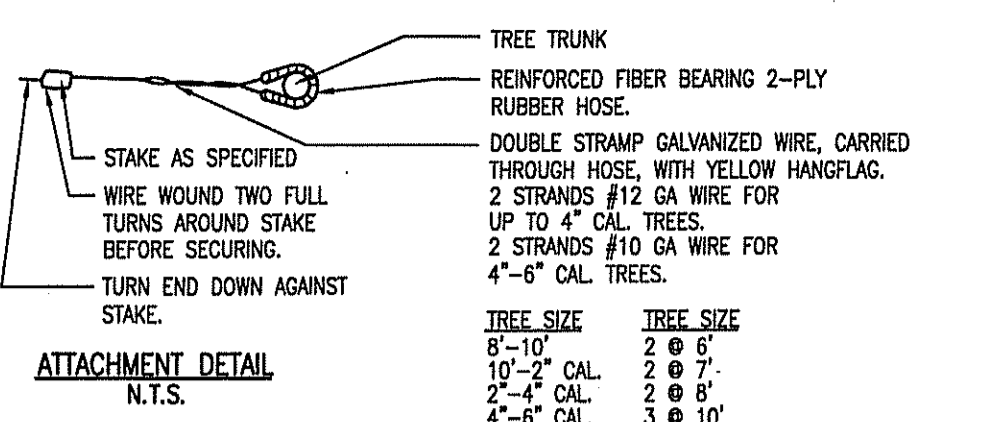
GARCO GULLING G13-3XL-150MH-HS



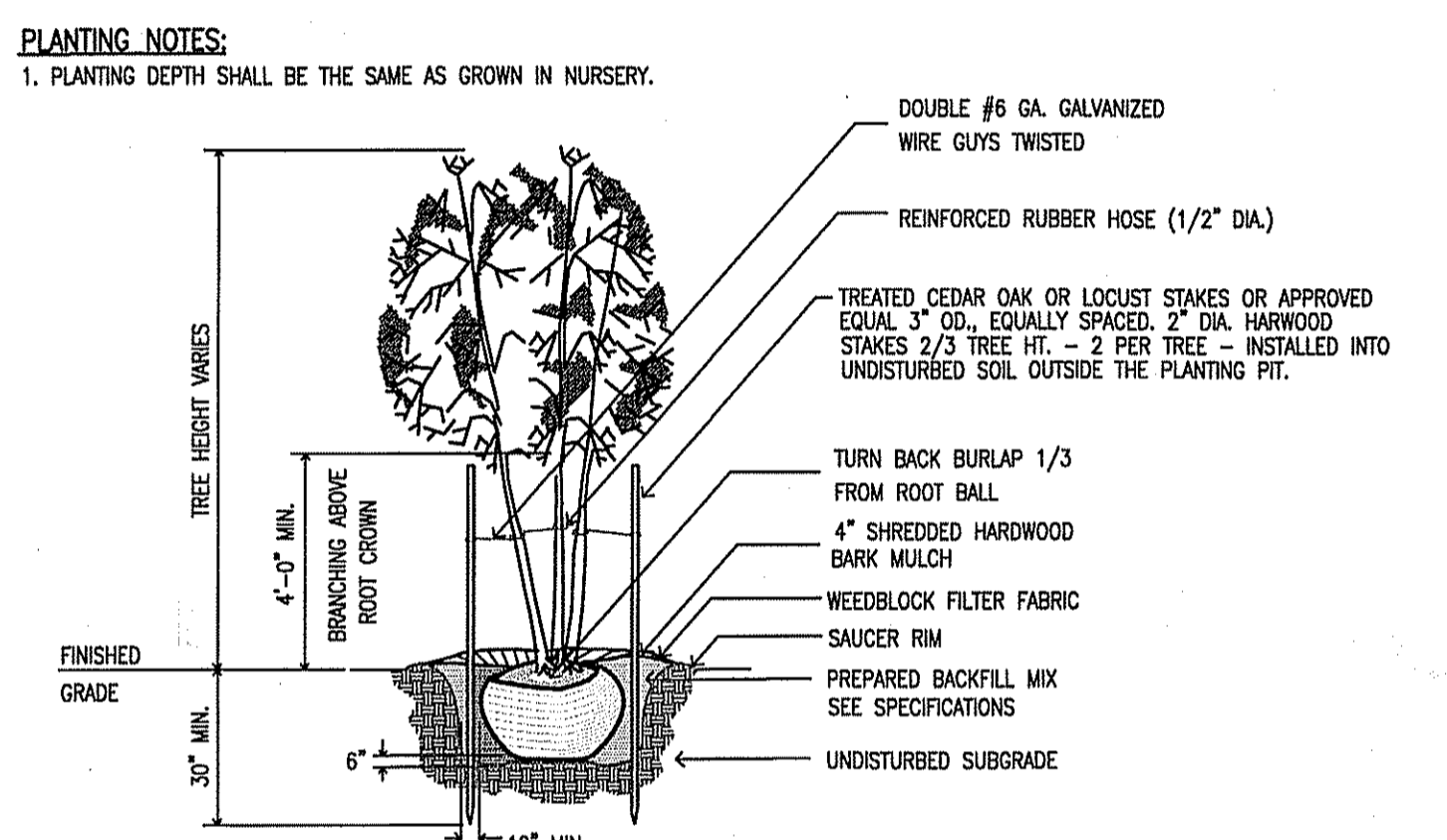
POLE AND ATTACHMENT DETAIL
CONCRETE FOOTING BY OTHERS



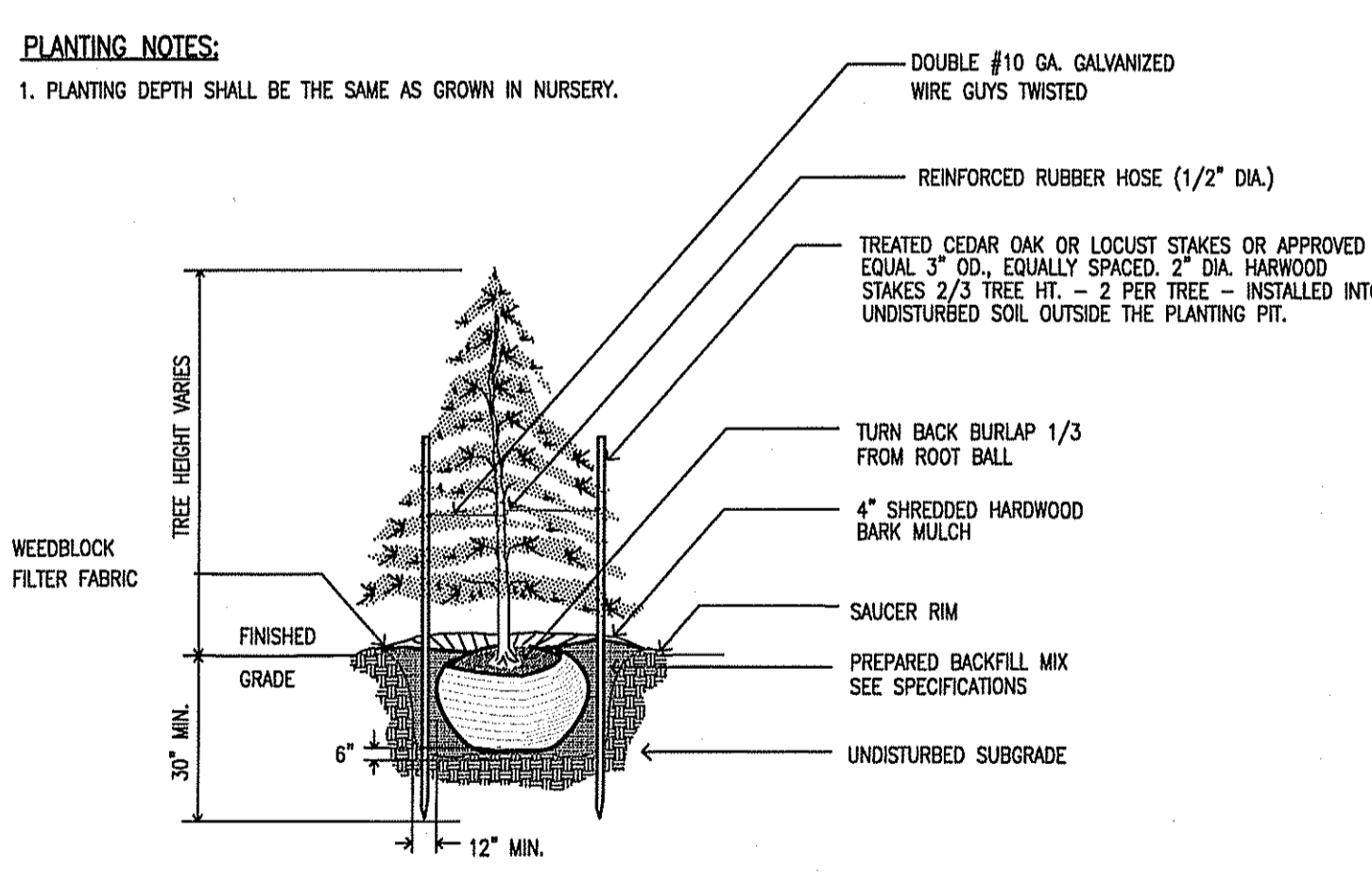
TREE REPLACEMENT NOTES
TOTAL NUMBER OF TREES TO BE REMOVED = 66 TREES
SEE SHEET 3 FOR CALIPER AND LOCATION OF THE TREES
TO BE REMOVED.
TOTAL OF NUMBERS OF TREES TO BE PLANTED = 69 TREES



SHADE TREE PLANTING DETAIL
N.T.S.



ORNAMENTAL TREE PLANTING DETAIL
N.T.S.



CONIFEROUS TREE PLANTING DETAIL
N.T.S.

PLANTING SCHEDULE				
KEY	QTY	PLANT LIST		DESCRIPTION
		BOTANICAL NAME	COMMON NAME	
SHADE TREES				
QR	10	Quercus Rubrus	Red Oak	2 to 2 1/2 inch caliper B & B wire baskets to be removed
SHRUBS				
EC	45	Euonymus Alatus Compactus	Dwarf Winged Euonymus	2 to 2 1/2 feet B & B
ICC	6	Ilex Crenata Compacta	Compacta Japanese Holly	2 to 2 1/2 feet B & B
GROUND COVER				
JS	60	Juniperus Chinensis 'Sargentii'	Sargent Juniper	18 to 24 inches #3 con
EVERGREEN TREES				
PA	28	Picea Excelsa (Abies)	Norway Spruce	6'-8' B&B FULL FURNISHED TO THE GROUND
PS	24	Pinus Strobus	Eastern White Pine	6'-8' B&B FULL FURNISHED TO THE GROUND
ZS	6	Zelkova Serrata	Green Vase Zelkova	2 to 2 1/2 inch caliper B & B

REV.	DATE	DESCRIPTION	CHK'D.	APP'VD
9	1/14/20	REVISED PER INCREASED PARKING AISLE WIDTH	JB	JB
8	12/8/17	REV. PER ONE WATER CONNECTION REVIEW LETTER OF 8/9/17 & 10/9/17	JB	JB
7	7/19/17	REVISED PER COUNTY COMMENTS OF 4/24/17 & TWP COMMENTS OF 5/8/17	JB	JB
6	9/29/16	REVISED PER COUNTY PLANNING BOARD CONDITIONAL APPROVAL OF 8/10/16	JB	JB
5	5/4/16	REVISED PER TWP. REVIEW LETTER & AMENDED RESOLUTION	JB	JB
4	10/22/15	REVISED PER BUILDING MODIFICATIONS	JB	JB
3	6/16/11	REVISED PER TWP. & COUNTY REVIEW LETTERS	JB	JB
2	2/15/10	REVISED PER TWP. REVIEW LETTERS	SB	SB
1	11/25/09	REVISED PER ZONING BOARD COMMENT LETTER DATED 10/14/09	SB	SB

Harbor Consultants Inc.
Engineers & Surveyors
320 NORTH AVENUE EAST
CRANFORD, N.J. 07016
Phone (908) 278-2715 Fax (908) 709-1738
Email: info@hcieg.net

AMENDED FINAL SITE PLAN
LANDSCAPE & LIGHTING PLAN
114 TENNENT ROAD
LOT 28.02, BLOCK 147
COUNTY OF MONMOUTH NEW JERSEY

VICTOR E. VINEGRA
PROFESSIONAL ENGINEER & LAND SURVEYOR
NEW JERSEY LICENSE NO. 34469

TOWNSHIP OF MARLBORO
SCALE: 1"=30'
DATE: 5/18/09
DESIGNED BY: J.T.O.
DRAWN BY: F.A.U.
WORK FILE: 2003008.7 L&L
CERTIFICATE OF AUTHORIZATION NO. 246A27962100
PROJECT NO. 2003008.7

COPYRIGHT © 2009, HARBOR CONSULTANTS INC. - ALL RIGHTS RESERVED.
 THIS DOCUMENT IS THE PROPERTY OF HARBOR CONSULTANTS INC. AND IS TO BE
 USED ONLY FOR THE PROJECT AND SITE SPECIFICALLY IDENTIFIED.
 ANY REUSE OR REPRODUCTION OF THIS DOCUMENT WITHOUT THE WRITTEN PERMISSION OF HARBOR CONSULTANTS INC. IS PROHIBITED.